



FIVE WAY DOUBLE ACTUATOR AIR OPERATED VALVE



M05

DESCRIPTION

Mechanical Characteristics:

Five Way Two Position Double Actuator Bistable Air Operated Valve. Suitable for gaseous media. Model for liquid media available upon request. Forged Brass, Nickel Plated Brass or Stainless Steel body. Stainless Steel internal moving parts. Stainless Steel springs. Valve will operate in any position.



M05 / M15 Double Actuator, Bistable.

In: E
Air in P1: From E to U1
From U2 to S2

Air in P2: From E to U2
From U1 to S1

At Rest: Latched in the last position

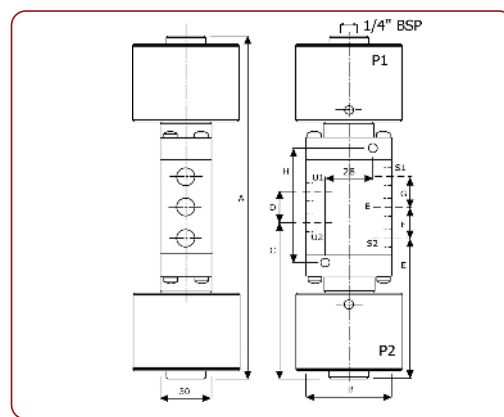


PNEUMATIC ACTUATOR INFORMATION

Simple effect actuator with pneumatic spring return. Brass or Nickel Plated Brass Actuator.

SPECIFICATION:

Minimum Operating Pressure:	2 Bar.
Maximum Operating Pressure:	10 Bar.



SPECIFICATIONS & DIMENSIONS

Model	Orifice MM					Nominal Max.	Pressure in Bar		Flow Factor KV (L/Min.)	Weight Kg.	Dimensions MM								
	A	B	C	D	E		Differential				A	B	C	D	E	F	G	H	
							Min.	Max.											
M05		70	1/4"			7.0	10	0	10	12.5	1.8	204	50	42	18	84	18	18	69

ORDER CODES

A Body	B Port	C Seals (fluid temp. min / max)		
T Brass	C 1/4" BSP	D 1/4" NPT	0 NBR (-10°C to + 70°C)	
N Nickel Plated Brass			1 VITON (-10°C to + 90°C)	
I 316 Stainless Steel			7 HNBR (-45°C to + 90°C)	