



Stainless steel 316L & Copper Free Aluminum Silencers - SLHF/SLVP/SLSC* series

Silenziatori in SS316L ed alluminio esente rame - Serie SLHF/SLVP/SLSC*

- Available high flow, bug-screen and flush silencers
- Suitable to onshore, offshore, pharmaceutical, medical and food applications
- Full stainless steel 316 construction
- Suitable for corrosive environments
- NPT standard threads
- Quick delivery
- ATEX 2014/34/UE  Ex approved



- Disponibili silenzatori ad alta portata, anti-insetto ed a scomparsa
- Adatto in applicazioni marine, petrolchimiche, farmaceutiche, medicali e alimentari
- Costruzione completamente in acciaio inossidabile AISI316
- Idonei per ambienti corrosivi
- Filetti NPT standard
- Rapida consegna
- ATEX 2014/34/UE  Ex approvato

Media / Fluido	Compressed air, inert gases, sweet and sour gases
Connection / Connessioni	1/8", 1/4", 1/2", 3/4", 1" NPT
Working pressure Pressione operativa	0...12bar
Operating Temperature Temperatura di esercizio	-55°C up to 150°C
Rumor reduction Riduzione del rumore	70%
Threads type / Tipi di filetto	NPT male std, BSP (on request)
Process Temperature Temperatura di processo	400°C max

Air supply must be dry enough to avoid ice formation at temperatures below +2°C (+35°F).

*NB: 1/8" NPT SLSC flush silencers are available also in copper free aluminum alloy

*NB: i silenzatori a scomparsa SLSC da 1/8" NPT sono disponibili anche in alluminio esente rame

BUILDING MATERIALS SS316L VERSION	Materiali costruttivi versione in 316L
Body in 316/316L bar stock stainless steel	Corpo in acciaio inossidabile da barra AISI316/316L
Cup in 316/316L bar stock stainless steel	Fondello in acciaio inossidabile AISI316/316L
Filter in sinterized 316 stainless steel wire	Filtro in filo di acciaio inossidabile AISI316 sinterizzato
Nuts and screws in A2 stainless steel	Viti e dadi in acciaio inossidabile A2

BUILDING MATERIALS ALUMINUM VERSION - ONLY SLSC 1/8" NPT SERIES	Materiali costruttivi versione in alluminio - solo serie SLSC 1/8" NPT
Body in copper free aluminum alloy	Corpo in alluminio esente rame
Filter in sinterized 316 stainless steel wire	Filtro in filo di acciaio inossidabile AISI316 sinterizzato

Overall dimension

Dimensioni di ingombro

SLHF - silenziatori ad alta portata
SLHF - high flow silencers

www.sitecna.eu

Fig.1

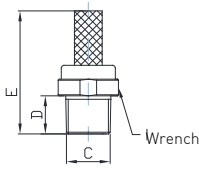
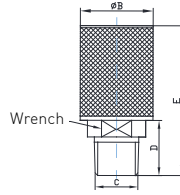


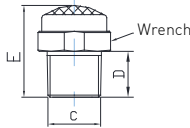
Fig.2



Models Modelli	Size-C Taglia	Thread Filetto	E (mm)	D (mm)	B (mm)	Wrench Chiave	Drawing Disegno di riferimento
SLHF02NSS	1/8"	NPT male	28,5	9	-	13	Fig 1
SLHF04NSS	1/4"	NPT male	35,5	11	-	17	Fig 1
SLHF06NSS	3/8"	NPT male	Tbc	13	-	19	Fig 1
SLHF08NSS	1/2"	NPT male	54	18,5	-	24	Fig 1
SLHF12NSS	3/4"	NPT male	65	20	58	36	Fig 2
SLHF16NSS	1"	NPT male	73.5	23	58	36	Fig 2

SLVP - silenziatori anti insetto
SLVP - bug-screen silencers

Fig.3



Models Modelli	Size-C Taglia	Thread Filetto	E (mm)	D (mm)	Wrench Chiave	Drawing Disegno di riferimento
SLVP02NSS	1/8"	NPT male	17.5	9	13	Fig 3
SLVP04NSS	1/4"	NPT male	21.5	11	17	Fig 3
SLVP06NSS	3/8"	NPT male	24.5	13	19	Fig 3
SLVP08NSS	1/2"	NPT male	32	18,5	24	Fig 3
SLVP12NSS	3/4"	NPT male	34,5	20	36	Fig 3
SLVP 16NSS	1"	NPT male	45.5	24,5	36	Fig 3

SLSC- silenziatori a scomparsa
SLSC - Flush silencers

Fig.4

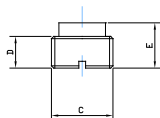
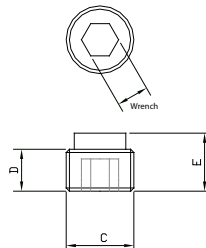


Fig.5



Models Modelli	Size-C Taglia	Thread Filetto	E (mm)	D (mm)	Wrench Chiave	Drawing Disegno di riferimento
SLSC02NSS*	1/8"	NPT male	9	6.5	5	Fig 5
SLSC04NSS	1/4"	NPT male	10	7	-	Fig 4

* Copper free aluminum alloy mod SLSC02NAL

BT-SLSS/C15B